

Electrical driven torque wrenches

alkitronic-EF / EFW

alkitronic-EF_{plus} / EFW_{plus}

Operation and drive technic on
highest quality level

- micro processor controlled
- brush-free
synchronized motor
- maintenance-free
and low in wear



®

alkitronic

alki
TECHNIK
GmbH

alkitronic® - EF..-Torque Wrench

Informations

alkitronic® -EF... - the new generation of continuous rotating torque wrenches!

Convincing drive concept: The electric- and frequency controlled brush-free synchronized tool of alkiTECHNIK

- consistent quality of your screwings and low running costs (maintenance-free and low in wear)
- **highest mounting speed:** 3 times faster as conventional electrical drives
- **highest precision:** exact shut-off when reaching required torque due to reduction of shut-off speed
- Advantage:** centrifugal force of motor and gearing does not impair shut-off torque
- suitable for all **international electric networks** (100-253V/45-66Hz)
- **exact shut-off torque** also in operation with **emergency unit**
- **safe tool operation** due to ergonomic operation concept
- **Innovation:** alkitronic® - Torque Wrenches "**Allweather**" version with Protection Art IP 54. Optionally available.

Series EF



Series EFplus

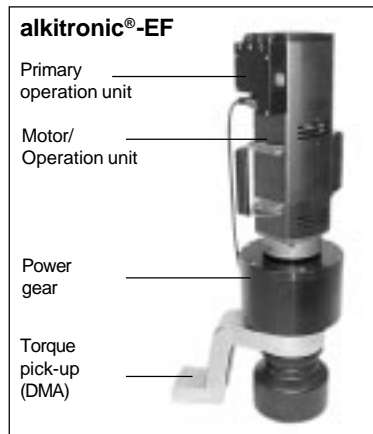


alkitronic® - EF... Torque Wrenches - select your type of operation:

Series EF.. - large torque range due to **19 selectable shut-off torques**. Pre-set torque and adjusted torque direction are displayed by the corresponding light-emitting diodes.

Series EF..plus the **Comfortable Version** - Pre-setting of screwing programmes (Modes) with easy parameter setting i.e. **Torque and Angle**, display and menu operation via LC-Display.

The **alkitronic® - Torque Wrenches** for torque ranges from 160 up to 40.000 Nm additionally available in two construction versions: **Series EF/EFplus** - Type of construction: upright. **Series EFW/EFWplus** - Type of construction: angled, suitable for applications in narrow spaces. Highly suitable for vertical screwings with horizontal service position.

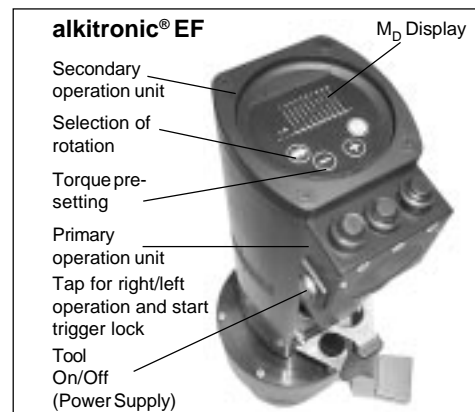
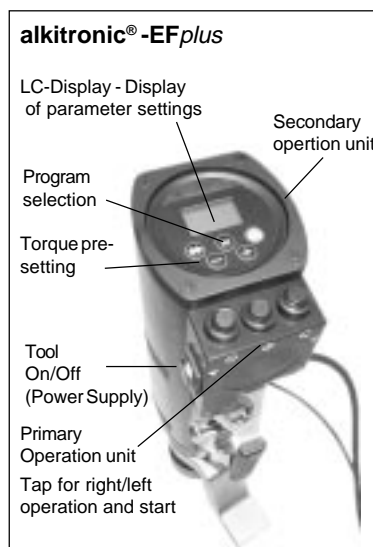


Technical Details: alkitronic® -EF.., -EFW..

- Torque speed, frequency and torque are correspondingly regulated and controlled. **Microcontrolled monitoring combined with a processor controlled switch-off electronic** guarantee precise repeatability of pre-set torque. Repeatability accuracy for switch-off $\pm 5\%$ for identically soft and hard joints.
- **Integrated motor protection:** for safety reasons an **automatic shut-off of temperature** is implemented in the **alkitronic®-EFC, -EFCplus**. A built-in **permanent-cooling fan** keeps on running after the safety shut-off and thus provides short periods of cooling.
- **Two principles of construction within one tool:**
 - A-swivelling:** free joint motor-/operation unit with the torque pick-up (DMA).
 - B-rigid:** fixed joint motor-/operation unit with the torque pick-up (DMA).
- **Ergonomic operation concept:** Primary- and secondary operation unit

Primary operation unit: Switching On/Off of tool; **Tap operation:** comfortable, slow Right/Left rotation for safe and precise positioning of tool. Start of screwing; trigger lock for continuous operation until exact shut-off.

Secondary operation unit (provision of various functions dependent of the torque type): display and adjustment of shut-off torques, sense of rotation, angle, loosening, rotations in angle degrees or number of rotations incl. menu operation etc.



alkitronic® -EF..

Future has begun - Protection Art IP 54 is reality

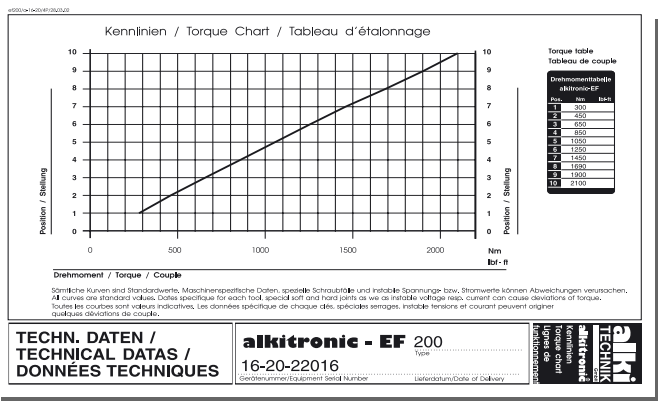
The great advantage-no loss of working hours due to bad weather!

No matter if it rains or if it snows

...the allweather torque wrench alkitronic®-EF.. with Protection Art IP 54 makes you independent of the weather.



Flow chart (example) to determine torque values in relation to required torque ranges.



Accessory:

You will find a large range of standard equipment in our accessory leaflet!

Subject to confirmation, plus packing and VAT

The new comfortable generation of **alkitronic®- EF.. Torque Wrenches** much faster, more powerful within different fields of application.

alkitronic-EFW
alkitronic-EFWplus
Version
Protection Art IP54



alkitronic-EFW
alkitronic-EFWplus



alkitronic-EF
alkitronic-EFplus



alkitronic-EFR

alkitronic-EF-SG

(for our product leaflet contact us)



Made in Germany

EF/alki/1/111103/Le

Specifications are subject to be changed without notice

a product of
alki
TECHNIK
GmbH

Münchener Str. 53
D-85051 Ingolstadt
Phone 08 41/ 9 74 99-0
Telefax 08 41/ 7 50 41
info@alkitechnik.de
www.alkitechnik.de