


Education, Children's and Cultural Services- an introduction

Robert Henderson


Head of Protective and Preventative
Services



London Borough Richmond - profile

- 1 of 32 London Boroughs
 - 180,000 population, 23% children
 - Wealthy and healthy with life expectancy 79.4 for men and 83.1 for women but 7.7 gap between rich and poor
 - 2 areas in top 25% most deprived and another 7 in 25-50% most deprived
- 

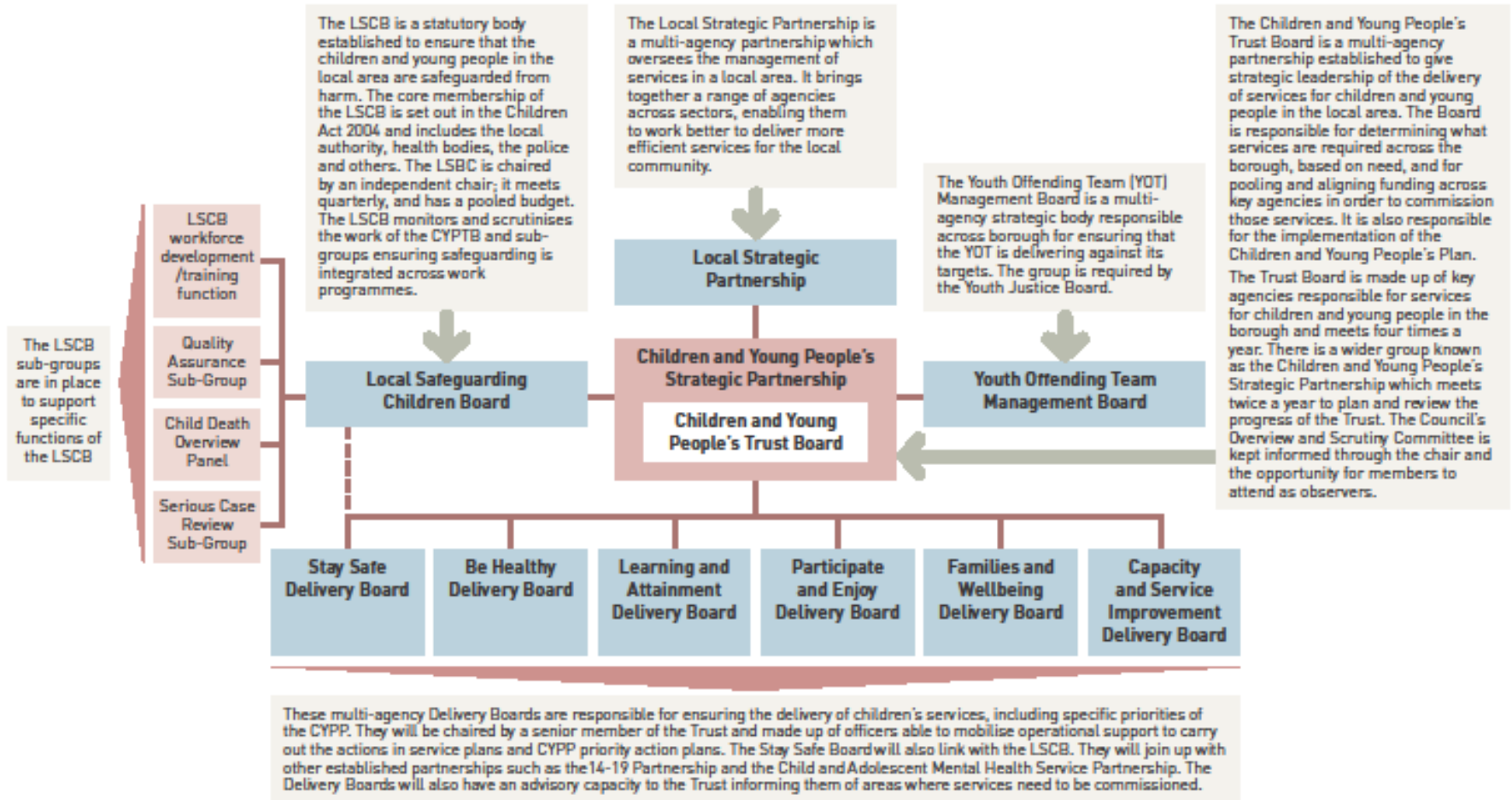
London Borough Richmond - profile

- 9% BME, although this is 19% 10 – 19 year olds and some primary schools BME population = 35% and secondary 45%
 - Children services judged as outstanding with best primary schools in country
 - 53 Schools, 21,000 pupils
 - 100 children looked after
 - 50 children on statutory child protection plan
 - 225 children registered as disabled
 - 550 (3%) with a special educational needs statement plus 2500 with additional educational needs
 - 150 young people involved in statutory youth offending service
- 


Governance

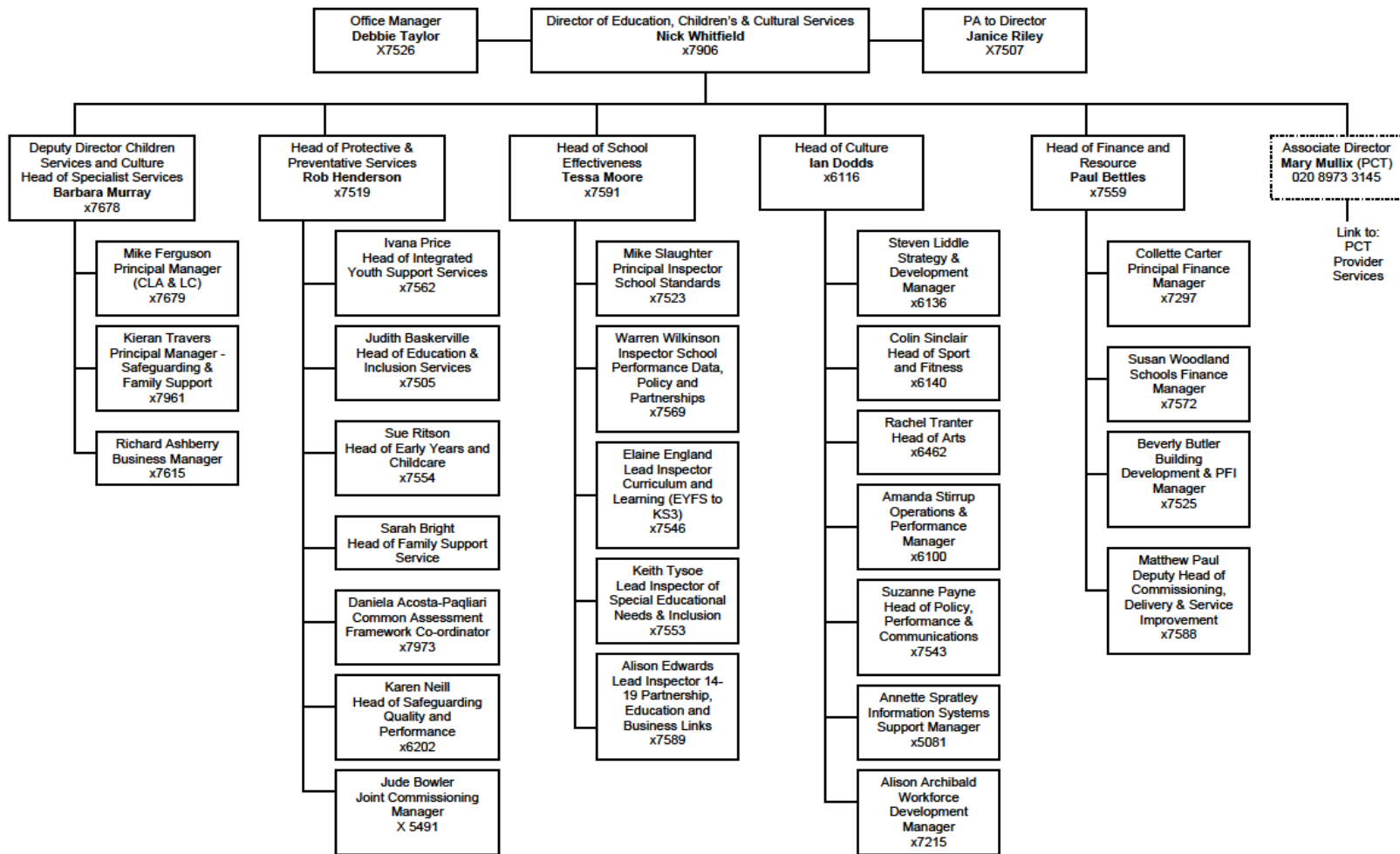
Annex C: Children and Young People's Trust – governance structures

Governance structure for the delivery of children's services



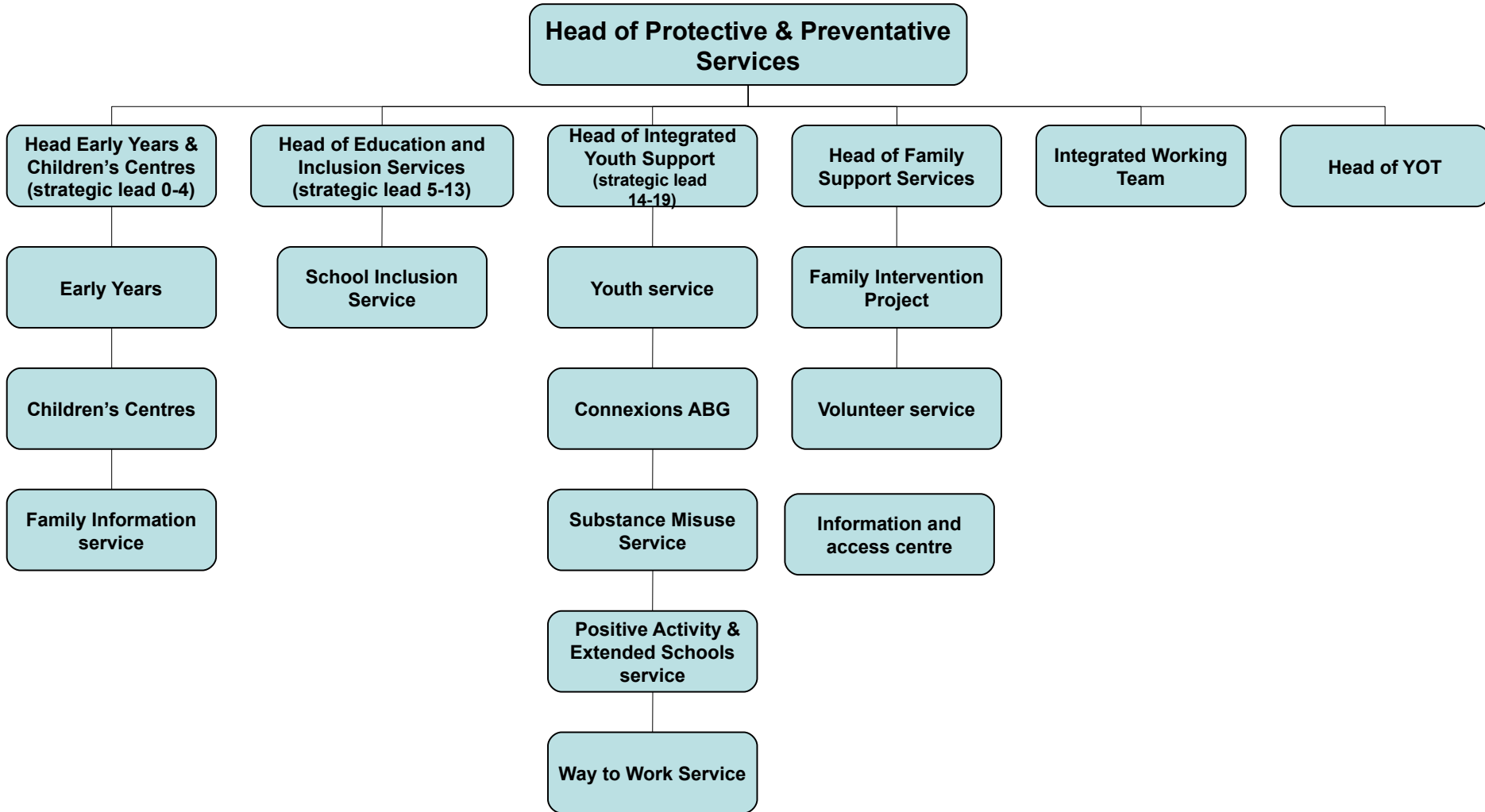
Children & Young People Strategic Partnership – Priorities 2010/11

1. Safeguarding – early identification and intervention
 2. Risky Behaviour – Young people's priority
 3. Improving attendance and behaviour
 4. Improve 14 – 19 provision
 5. More things to do and places to go
 6. Immunisations
- 



Context – structural opportunities

Protective & Preventative Services – Structure Chart



Context – The Common Assessment Framework

Richmond upon Thames


Stepping up – Stepping Down

Six Step CAF Windscreen

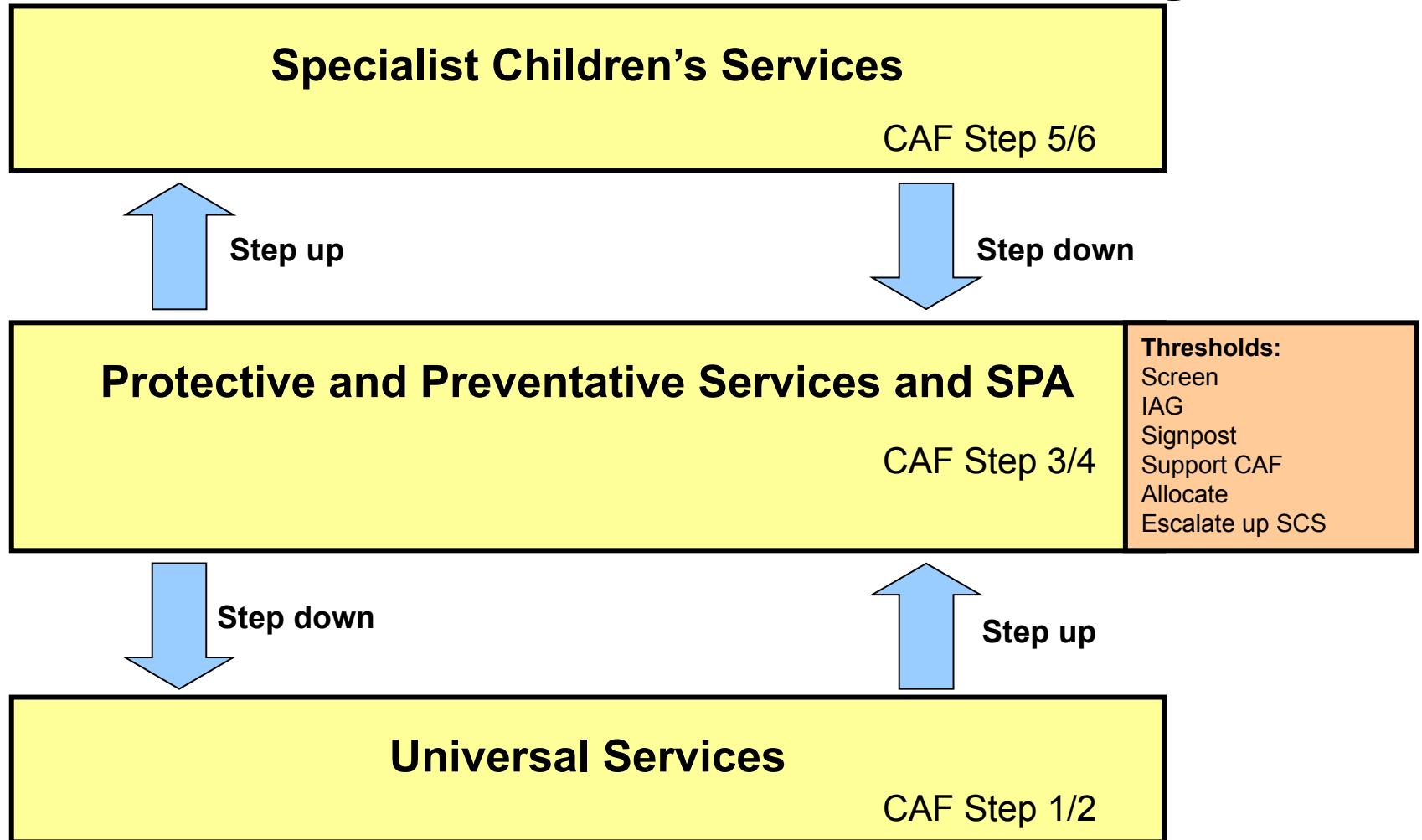


Context – The Common Assessment Framework

Challenges –

- Early identification in universal services
 - Multi agency locality based services with borough wide specialist services
 - Lead professional – accountability and falling through the gap
 - Meeting needs and team around the child
 - Common language
 - Clear referral pathways and thresholds
 - Develop a common core workforce – clarify roles and responsibilities
 - Create efficiencies – minimise duplication, maximise simplicity
- 

Single point of access – centralised point for all new contacts and decision making



Any questions?

