

CUE TWO

CUE ONE

CUE FOUR



CUE-Series

3-way high output ultra low profile stage monitor series

The new CUE-Series stage monitors feature a triaxial design, engineered without compromise

The advanced design aligns the acoustical centers of the transducers to produce a single point source. This unique loudspeaker technology provides a coherent wave front

without hot spots. Precise directivity ensures uniform coverage with perfect time alignment between the components.

CUE ONE

- 3-way coherent point source technology
- Double 12" and 1.4" coax driver
- Asymmetrical vertical coverage 55° + 40°
- Outstanding audio quality
- Ultra low feedback
- Ultra low profile design
- Integrated hardware for increased dispersion
- Powerful low frequency response
- Mechanically durable
- Discrete cables connection
- Passive or bi-amp operation
- Light weight

The cabinet contains double 12" extremely high power neodymium woofers and a 1.4" coaxial compression driver loaded on an asymmetrical 60° x 55° + 40° elliptical waveguide.

TECHNICAL SPECIFICATIONS CUE ONE

Type:	3-way high output stage monitor
Application:	Stage monitor
Frequency response:	54 Hz - 21 kHz (-3 dB)
Power handling AES:	2000 W
Peak Power:	8000 W
Sensitivity: *	104 dB
Max. SPL peak:	143 dB
Dispersion:	
Horizontal:	60°
Vertical:	55° + 40°
Components:	
Low frequency:	2 x 12" neodymium woofer 4" (101.6 mm) voice coil, 1000 W
High frequency:	1.4" neodymium coaxial driver 3.5" (90 mm) + 1.75" (44.4 mm) voice coil, 150 W + 80 W
Crossover:	750 Hz passive or bi-amp (internal connector), 6.3 kHz passive
Nominal impedance:	4 Ohm
Input connectors:	2x Neutrik™ NL4MP
Enclosure material:	15 / 18 mm plywood
Finish:	Textured black paint
Dimensions:	670 x 627 x 322 mm
Net weight:	32 kg

* Half-space loading

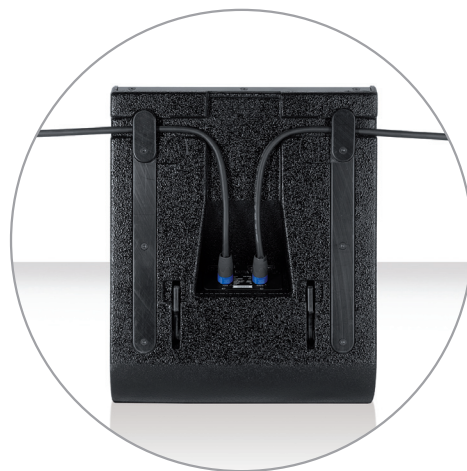


CUE TWO

- 3-way coherent point source technology
- 15" / 1.4" triaxial transducer
- 60° x 90° elliptical waveguide
- Outstanding audio quality
- Ultra low feedback
- Integrated hardware for increased dispersion
- Powerful low frequency response
- Mechanically durable
- Discrete cables connection
- Passive or bi-amp operation
- Light weight

The cabinet contains a triaxial transducer incorporating an extremely high power 15" neodymium cone driver and a 1.4" coaxial compression driver concentrically mounted to the woofer and loaded by a 60° x 90° elliptical waveguide.

TECHNICAL SPECIFICATIONS CUE TWO	
Type:	3-way high output stage monitor
Application:	Stage monitor
Frequency response:	54 Hz - 21 kHz (-3 dB)
Power handling AES:	1000 W
Peak Power:	4000 W
Sensitivity:*	103 dB
Max. SPL peak:	139 dB
Dispersion:	
Horizontal:	60°
Vertical:	90°
Components:	
Low frequency:	15" neodymium woofer 4" (101.6 mm) voice coil, 1000 W
High frequency:	1.4" neodymium coaxial driver 3.5" (90 mm) + 1.75" (44.4 mm) voice coil, 150 W + 80 W
Crossover:	750 Hz passive or bi-amp (internal connector), 6.3 kHz passive
Nominal impedance:	8 Ohm
Input connectors:	2x Neutrik™ NL4MP
Enclosure material:	15 / 18 mm plywood
Finish:	Textured black paint
Dimensions:	450 x 527 x 360 mm
Net weight:	25 kg
Weatherproof version:	Optional
* Half-space loading	



CUE FOUR

- 3-way coherent point source technology
- Double 8" and 1.4" coax driver
- Asymmetrical vertical coverage 55° + 40°
- Outstanding audio quality
- Ultra low feedback
- Ultra low profile design
- Integrated hardware for increased dispersion
- Mechanically durable
- Discrete cables connection
- Passive or bi-amp operation
- Light weight

The cabinet contains double 8" high power neodymium woofers and a 1.4" coaxial compression driver loaded by an asymmetrical 60° x 55° + 40° elliptical waveguide.

TECHNICAL SPECIFICATIONS CUE FOUR	
Type:	3-way high output stage monitor
Application:	Stage monitor
Frequency response:	54 Hz - 21 kHz (-3 dB)
Power handling AES:	500 W
Peak Power:	2000 W
Sensitivity:*	104 dB
Max. SPL peak:	137 dB
Dispersion:	
Horizontal:	60°
Vertical:	55° + 40°
Components:	
Low frequency:	2 x 8" neodymium woofers 2" (52 mm) voice coil, 250 W (AES) each
High frequency:	1.4" neodymium coaxial driver 3.5" (90 mm) + 1.75" (44.4 mm) voice coil, 150 W + 80 W
Crossover:	750 Hz passive or bi-amp (internal connector), 6.3 kHz passive
Nominal impedance:	8 Ohm
Input connectors:	2x Neutrik™ NL4MP
Enclosure material:	15 / 18 mm plywood
Finish:	Textured black paint
Dimensions:	450 x 427 x 260 mm
Net weight:	19 kg
Weatherproof version:	Optional
* Half-space loading	